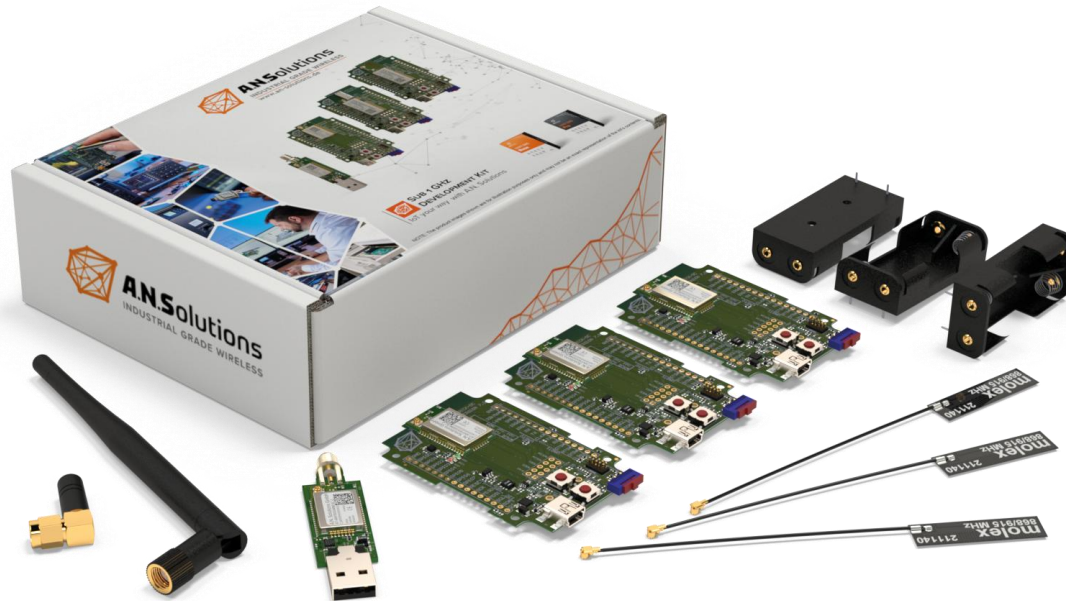


AT-ANY DESIGN 900ARM-SC Development Kit



A.N.Solutions
INDUSTRIAL GRADE WIRELESS



Based on the high-performance AT-ANY900ARM-SC Sub-1 GHz RF modules with a U.FL antenna connector, the AT-ANY DESIGN 900ARM-SC Development Kit provides the developers with:

- Easy way to learn how to use the AT-ANY RF modules and design unique wireless networking applications for sensing and control.
- Ability to try out different network topologies and determine the best match for the application requirements.
- Simplified prototyping of a wireless sensor network, thanks to the sensors, integrated in the BRICK board.



A.N.Solutions
INDUSTRIAL GRADE WIRELESS

AT-ANY DESIGN 900ARM-SC Development Kit (Cont.)

- AT-ANY DESIGN 900ARM-SC platform support all IEEE 802.15.4 Sub-1-GHz frequencies.
- Typical applications include smart buildings, industrial automation, and other mission-critical use cases requiring a superior signal penetration as well as power optimized, self-sufficient performance.
- The kit features support of third-party applications, reference implementations, and example applications utilizing a wide variety of digital and analog interfaces.
- Support of the intuitive development environment from Microchip®.
- Using the kit, the developers can create a wide range of standards-based wireless solutions fully compliant with IEEE 802.15.4 and Zigbee, and supporting various network topologies, from P2P to Tree to Mesh *.
- Customizable AT-ANY Smart MAC Suite ("SMS") Base software offers easy control and parametrization of AT-ANY platform's functionality via AT commands supporting all IEEE 802.15.4-based functions.
- Optional SMS Pro software provides extended functionality and features for sophisticated professional solutions. See slide 10 for details.
- Extended customization such as integration of the third-party devices or implementation of the dedicated interfaces and system requirements can be provided on request via tailored professional services.

* - Implementation of tree and mesh topologies requires SMS Pro version.



A.N.Solutions
INDUSTRIAL GRADE WIRELESS

AT-ANY DESIGN 900ARM-SC: Features and Benefits

- Fully programmable AT-ANY USB dongle and AT-ANY BRICK boards.
- Reference implementations and example applications utilizing various interfaces.
- Easy implementation of various sensors using AT-ANY BRICK boards.
- Compatibility with the third-party embedded software applications such as Microchip BitCloud® stack and associated ANSI C API programmability, as well as 6LoWPAN references.
- Compatibility with the 3rd party applications, including wireless sensor networking demo application, range measurement, and more.
- Software adjustable support of European, US, Japanese and Chinese Sub-1 GHz ISM bands.
- Full compliance with IEEE 802.15.4-2006, Zigbee and more.
- AT-ANY900ARM-SC modules feature an integrated U.FL connector to apply versatile external antenna options based on leading-edge Microchip SAMR30 chipset.

Supported Sensors and Features



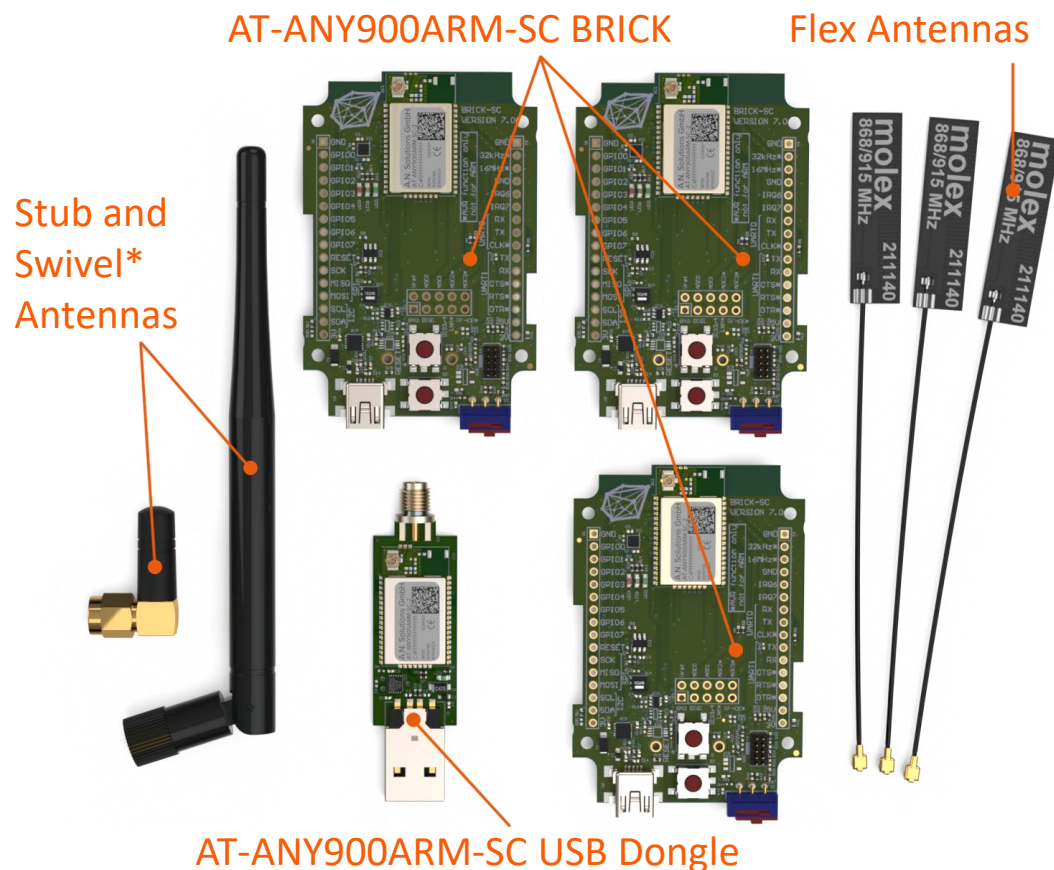
A.N.Solutions
INDUSTRIAL GRADE WIRELESS

BRICK Part.-No.:	Sensors & Features on AT-ANY BRICK Boards						Supported Features by AT-ANY Modules		
	LM73 Temp. Sensor	SI7006 Humidity & Temp. Sensor	BMA222E Acceleration Sensor	Configurable LEDs	User Button	Reset Button	U.FL Connector	Integrated Antenna	On-Board Data-Flash
AT-ANY2400-SC-1 BRICK	yes	yes	yes	3	1	1	-	yes	-
AT-ANY2400-SC-2 BRICK	yes	yes	yes	3	1	1	yes	-	-
AT-ANY2400-SC3-1 BRICK	yes	-	-	3	1	1	yes	yes	2 Mbit SST25VF0202
AT-ANY2400-SC3-2 BRICK	yes	-	-	3	1	1	2	-	2 Mbit SST25VF0202
AT-ANY900-1 BRICK	yes	yes	yes	3	1	1	-	yes	2 Mbit SST25VF0202
AT-ANY900-2 BRICK	yes	yes	yes	3	1	1	yes	-	2 Mbit SST25VF0202
AT-ANY900ARM-SC BRICK	yes	yes	yes	3	1	1	yes	-	4 Mbit AT25XE04
Used AT-ANY USB Dongles:									
AT-ANY2400-SC-Pro USB	-	-	-	2	-	-	-	2	-
AT-ANY900ARM-SC USB	-	-	-	1	-	-	(SMA)	-	4 Mbit AT25XE04

AT-ANY DESIGN 900ARM-SC: What's In a Box?



A.N.Solutions
INDUSTRIAL GRADE WIRELESS



- 1 x AT-ANY900ARM-SC USB Dongle
- 3 x AT-ANY900ARM-SC BRICK development boards with battery holders
- 3 x Flex antennas
- 1 x Stub antenna
- 1 x SMS Base Software (preloaded)
- 1 x User information pack is available via download
- Additional components can be ordered separately

* Optional Extensions



*

AT-ANY900ARM-SC USB Dongle at a Glance



A.N.Solutions
INDUSTRIAL GRADE WIRELESS



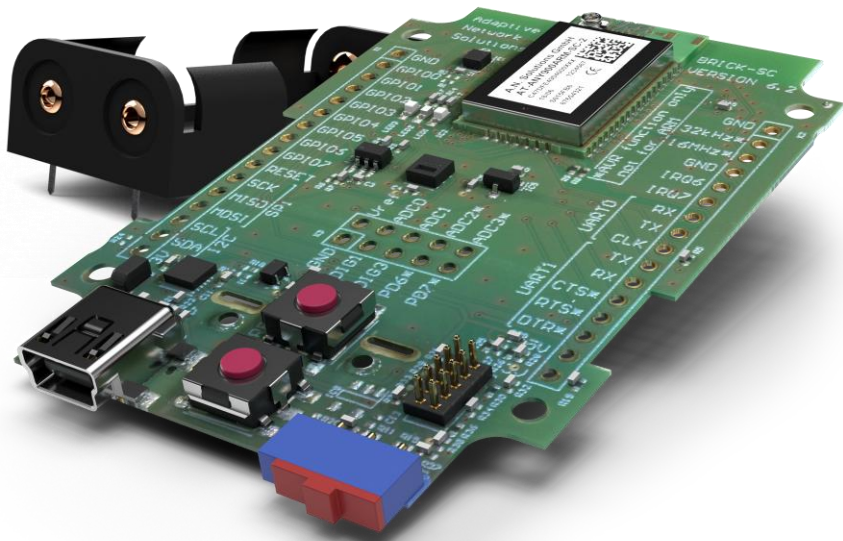
- USB 2.0 compliant IEEE 802.15.4 -2006 based hardware platform within compact USB dongle format
- Software adjustable support of European, US, Japanese, and Chinese Sub-1 GHz ISM bands
- Commercially maintained FTDI Driver Suite ensures a seamless OS integration and support
- Focused design options tailored for target appliances
- Network topology: P2P, P2MP, Star, Tree*, Mesh* (IEEE802.15.4 and Zigbee PRO)
- Extra 256 kB on-board DataFlash for storing firmware images, application data and OTAU support
- Adjustable data rates depending on selected model up to 1 Mbps, e.g. Zigbee: 250 kbps gross
- Upgradeable via on-board bootloader or integrated JTAG interface
- Customized enclosures applicable as accessories

* - Implementation of tree and mesh topologies requires SMS Pro version.

AT-ANY900ARM-SC BRICK at a Glance



A.N.Solutions
INDUSTRIAL GRADE WIRELESS



- USB 2.0 compliant IEEE 802.15.4 -2006 based development hardware platform within compact design form factor
- Software adjustable support of European, US, Japanese, and Chinese Sub-1 GHz ISM bands
- Complete AT-ANY module interface accessible via 2.54 mm pin sockets for application development
- Versatile integrated temperature, humidity, dewpoint, acceleration, and battery voltage sensors. See slide 4 for details.
- Power options include USB interface, battery holder (AAA) or pin socket
- Programmable push-button and status LEDs
- Commercially maintained FTDI Driver Suite ensure a seamless OS integration and support
- Integrated power supply monitoring for battery operation

AT-ANY SMS Base To Enable Quick-Start



A.N.Solutions
INDUSTRIAL GRADE WIRELESS



- AT-ANY modules can be connected directly to a host processor as a communication extension whereas the AT-ANY module's interfaces enhance the system's capabilities by adding additional sensors and actuators.
 - User can program and facilitate AT-ANY Platform without embedded programming knowledge by simply using S-Register mapping and AT-Commands.
 - Smart MAC Suite provides IEEE 802.15.4 functionality to users.
 - Users can set up basic network topologies (Star, Peer-to-Peer) using static routing.
 - Data packages can be transmitted directly or indirectly, acknowledged or broadcasted.
-
- Support of versatile temperature, humidity, and acceleration sensors that can be integrated with AT-ANY-BRICK platform. Sensors include Texas Instruments LM73, Silicon Labs Si7006, Bosch-Sensortec BMA2xxE Serie, as well as Maxim DS7505.
 - Extended support of up to 10 GPIO Lines.
 - Functionality enhancements, including support of custom sensors, and implementation of external host intelligence directly into AT-ANY module, are available on request.
 - Integrated serial bootloader simplifies firmware upgrades.
 - More hardware support, including additional sensors, more GPIO lines, AD/DA features or different UART baud rates can be provided on request.

AT-ANY DESIGN Additional Components



A.N.Solutions
INDUSTRIAL GRADE WIRELESS



- AT-ANY900-1, AT-ANY900-2 and AT-ANY900ARM-SC BRICK Boards
 - AT-ANY900ARM-SC USB Dongles*
 - AT-ANY USB Dongle Enclosure
 - Versatile internally qualified external antenna options
 - AT-ANY Smart Mac Suite (SMS) Pro
- * Based on selected ISM frequency band



AT-ANY SMS Pro: Value-Add Option

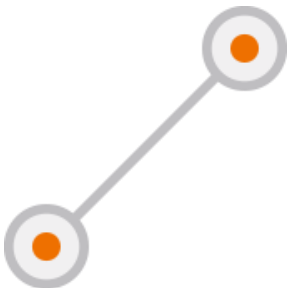


A.N.Solutions
INDUSTRIAL GRADE WIRELESS

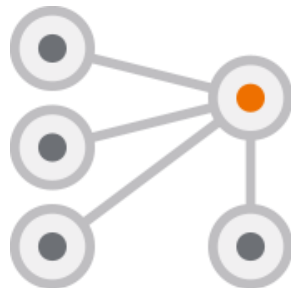


- "Free Devices" are supported, enabling tree network topology.
- Broadcasts (point-to-multipoint transmissions) supported.
- Direct data transmission (acknowledged or unacknowledged) supported.
- Indirect data transmission supported.
- Frame redirection supported.
- UART speed can be adjusted by customer.
- CW mode support for certification purposes and test cases
- LWMesh routing algorithm support
- Direct transceiver register access

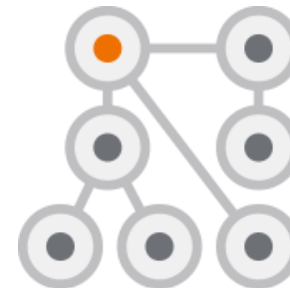
Network Topologies



Point-to-Point



Star



Tree



Mesh

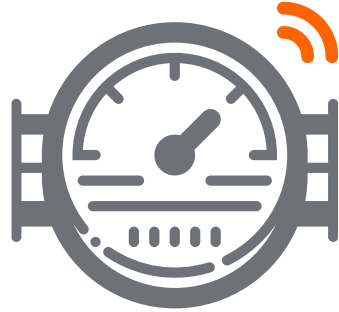
AT-ANY DESIGN: Application Areas



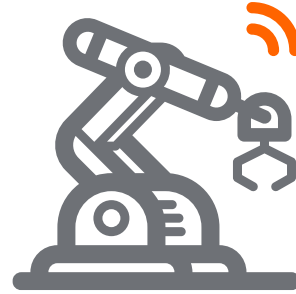
A.N.Solutions
INDUSTRIAL GRADE WIRELESS



Smart Buildings



Smart Energy & Metering



Industrial Automation



Automotive & Transport



Healthcare & Fitness



Agriculture



Smart Cities & Environment



Event Management



A.N.Solutions
INDUSTRIAL GRADE WIRELESS

AT-ANY DESIGN: Unique Design Aspects

The following proprietary features make AT-ANY DESIGN Development Kits stand out among the competition:

- **Ultra-Low Latency:** Supported by A.N. Solutions Experts developers will be able to create wireless network solutions with predictable low latencies. It is critical to have a predictably fast response in many application areas ranging from light switches to surveillance systems to remotely controlled construction equipment. Supporting the robust IEEE 802.15.4-based tree topologies, A.N. Solutions' proprietary software provides a reliable ultra-low latency solution for the mission-critical applications. The feature can even be extended and customized to enhanced networking topologies.
- **Optimized Power Consumption:** AT-ANY DESIGN kits offers developers an option to create power-optimized operation profiles for a wide range of applications. A number of different factors affect power consumption, including the transmission rate, the payload size, CPU clock speed, UART rate, modulation, signal-to-noise ratio, and more. A.N. Solutions' adaptive proprietary algorithms modify the physical (PHY) and the media access (MAC) layers of an IOT device's software stack and allow to find the right balance between the power consumption and the network performance. This feature can be activated on demand.

AT-ANY DESIGN: General Ordering Information



Part #	Description
AT-ANY-DESIGN-900-1	Development Kit based on AT-ANY900-1 RF Module
AT-ANY-DESIGN-900-2	Development Kit based on AT-ANY900-2 RF Module
AT-ANY-DESIGN-900ARM-SC	Development Kit based on AT-ANY900ARM-SC RF Module
AT-ANY-DESIGN-2400-SC-1	Development Kit based on AT-ANY2400-SC-1 RF Module
AT-ANY-DESIGN-2400-SC-2	Development Kit based on AT-ANY2400-SC-2 RF Module
AT-ANY-DESIGN-2400-SC3-1	Development Kit based on AT-ANY2400-SC3-1 RF Module
AT-ANY-DESIGN-2400-SC3-2	Development Kit based on AT-ANY2400-SC3-2 RF Module

Please note that applicable hardware extension can be individually selected and requested for getting customized DESIGN setup

AT-ANY DESIGN: Contact Information



Contacts

A.N. Solutions GmbH
Am Brauhaus 5
01099 Dresden
Germany

Tel.: +49 351 30 900 194

Fax: +49 351 30 900 189

Email: info@an-solutions.de

Sales:

Tel: +49 351 30 900 194

sales@an-solutions.de

Support:

Tel: +49 351 30 900 199

support@an-solutions.de

